

## WHO WE ARE

OUR MISSION IS TO PROTECT  
AND RESTORE THE PECONIC  
ESTUARY AND ITS WATERSHED.



The Peconic Estuary Partnership was established in 1992 under the EPA National Estuary Program as an "Estuary of National Significance" and adopted the first CCMP in 2001. As a National Estuary Program, PEP brings together all members of our community – Federal, State and local governments, non-profit organizations, businesses, academia and interested members of the public – to protect and restore the Peconic Estuary and its watershed.

## PECONIC ESTUARY PARTNERSHIP CONTACT INFORMATION

**Riverhead County Center**  
**300 Center Drive, Room 250S**  
**Riverhead, NY 11901**  
**Email: [peptalk@peconicestuary.org](mailto:peptalk@peconicestuary.org)**

The Comprehensive Conservation Management Plan (CCMP) is a blueprint of goals and actions for the next decade that the Peconic Estuary Partnership has adopted to protect and restore the Peconic Estuary and its watershed. To learn more about PEP's work for climate change, visit our website to view the goals and actions in our CCMP.

**[peconicestuary.org/ccmp2020/](http://peconicestuary.org/ccmp2020/)**



## THE PECONIC ESTUARY PARTNERSHIP



**The Peconic Estuary is an "Estuary of  
National Significance"**



# COMMITTEES AND ADVISORY GROUPS

The PEP committee structure creates partnerships for joint management of the Peconic Estuary and its watershed.

## POLICY COMMITTEE

The Policy Committee approves workplans and budgets, and resolves policy issues, including those identified by the Management Committee.

## MANAGEMENT COMMITTEE

The Management Committee develops program goals and recommends workplans and budgets to the Policy Committee.

## LOCAL GOVERNMENT COMMITTEE

The Local Government Committee shall operate as a standing advisory committee to provide a forum for the local governments within the Estuary Program study area and its partners to discuss, advise, and implement environmental restoration to allow for effective management of the study area.

## TECHNICAL ADVISORY COMMITTEE

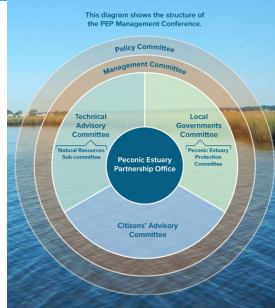
The Technical Advisory Committee provides technical guidance, recommending and overseeing scientific studies, research, and monitoring programs.

## CITIZENS' ADVISORY COMMITTEE

The Citizens' Advisory Committee (CAC) consists of members of the public that have interest in preserving and protecting the Peconic Estuary, and additional individuals are always welcome to join the CAC. Involvement of the CAC is vital in the success of the PEP as the citizens who are involved act as PEP ambassadors to the communities and groups within the Peconic Estuary watershed.

## PECONIC ESTUARY PROTECTION COMMITTEE

The PEP initiated the creation of the Peconic Estuary Protection Committee, an intermunicipal affiliation that focuses efforts on compliance with EPA's Clean Water Act and New York State's Phase II stormwater regulations for municipal separate storm sewer systems (MS4s). The PEPC is dedicated to leveraging the resources of municipalities and agencies within the watershed.



# WHY PARTNERSHIP IS IMPORTANT

As a coastal community on Long Island, we share the same water and the same habitats, and as a result, we must work together to address the same environmental issues. Efforts to protect and restore the Peconic Estuary are highly collaborative and PEP relies on the support of partners in this joint effort.

Thanks to partnerships with other nonprofits, governmental agencies, local businesses, and citizens, PEP is able to expand monitoring, restoration, education, and outreach efforts and share resources in order to better protect the estuary and its watershed.

We couldn't do this without your help!

## GET INVOLVED!

Learn more about our [Citizens Advisory Committee](#), [Homeowners Rewards Program](#), [Education and Outreach Programs](#), [Resources for Educators](#), [Wildlife Monitoring Network](#), and [Peconic Stewardship](#) on our [website](#).



# PEP COMPREHENSIVE CONSERVATION AND MANAGEMENT PLAN (CCMP) 2020

The PEP Comprehensive Conservation and Management Plan (CCMP) 2020 presents a collective vision for restoring and protecting the water quality and ecological integrity of the Peconic Estuary in the face of climate change over the next ten years. The partners' collective efforts will enhance quality of life for people on the East End and boost the local sustainable use of ocean resources for economic growth, improved livelihoods, and jobs while preserving the health of the ocean ecosystem, often referred to as the "blue economy," through the 2020s and beyond.

## CCMP GOALS:

### STRONG PARTNERSHIPS AND ENGAGEMENT

PEP is rededicating itself to cultivating relationships with new and existing partners, local governments and NGOs. Through engagement with the community, PEP works to empower people to act as stewards in support of estuary health.



**RESILIENT COMMUNITIES PREPARED FOR CLIMATE CHANGE**  
PEP will lead scientifically informed, proactive efforts by local communities that can reduce the negative impacts of climate change.



### CLEAN WATERS FOR ECOSYSTEM HEALTH AND RECREATION

PEP is taking action to reduce nitrogen pollution, harmful algal blooms, pathogens, toxic contaminants, and plastics in the Estuary to support the well-being of people and wildlife.



### HEALTHY ECOSYSTEMS WITH ABUNDANT, DIVERSE WILDLIFE

PEP will build scientific understanding and support decision-making to address threats to habitat and species.

