

CoastWise PARTNERS

Holly Greening & Rich Batiuk

We'll work for (good) food!



Who we are



Rich Batiuk, retired from Chesapeake Bay Program. Instrumental in designing Chesapeake Bay's extensive cooperative approach to meeting Bay targets.

Holly Greening, retired from Tampa Bay Estuary Program. Facilitated Tampa Bay's successful nutrient management and seagrass recovery strategy.



OFFERING VOLUNTEER ASSISTANCE WITH...



GOAL-SETTING



ESTABLISHING CRITERIA



TECHNICAL ADVICE



MONITORING DESIGN



WORKSHOP PARTICIPATION

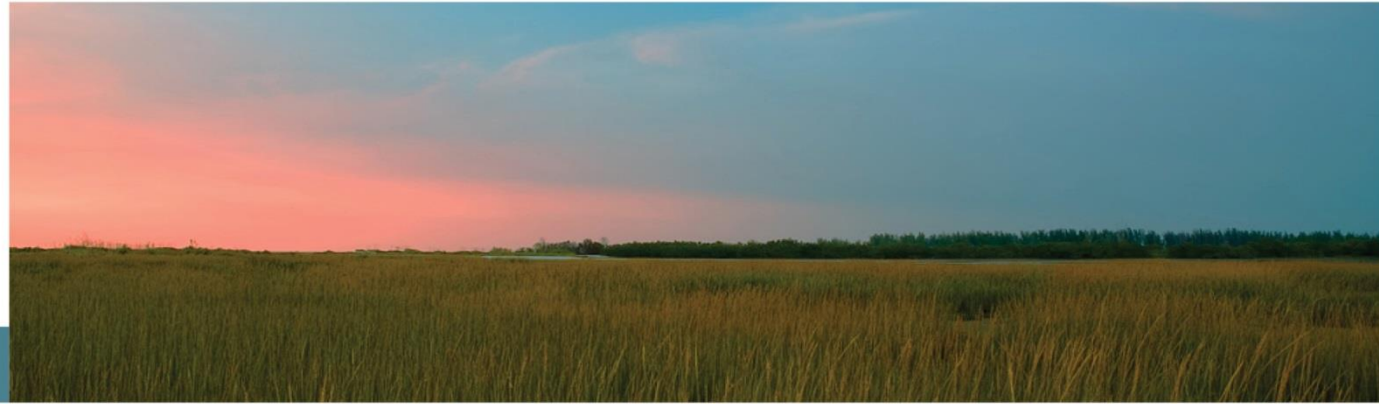


PEER REVIEWS

CoastWise PARTNERS

Holly Greening & Rich Batiuk

We'll work for (good) food!



To address recommendations from 2017 EPA Performance Evaluation letter, PEP has initiated efforts including collaborative development of the following:

- PEP Monitoring Strategy
- PEP Organizational Assessment & Guiding Principles

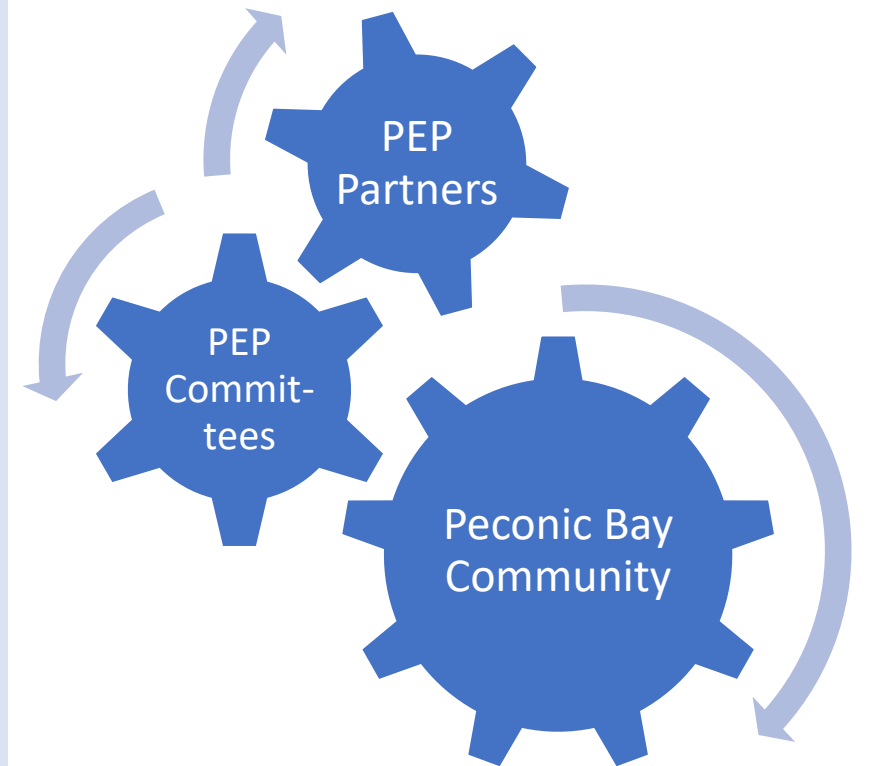
PEP Organizational Assessment

Task 1. Review and evaluate the relationships between all groups in the Management Conference (May-Nov 2019)
Can Committees work together more effectively to implement the CCMP?

Task 2. Develop Draft PEP Guiding Principles (by May 2020)
Ask all PEP participants for their input on each Committee's role; strength and weaknesses; ideas for strengthening PEP's organizational structure and role in the community

Draft Guiding Principles document based on results from input

Task 3. Full Management Conference workshop to finalize Guiding Principles (summer 2020)



PEP Organizational Assessment: Potential Guiding Principles

- PEP strengths and weaknesses, and how to address weaknesses
- Organizational structure graphic summarizing how the committees work together
- Committee roles and responsibilities
- Enhancing collaborative decision making
- Recommendations for making the organizational structure more effective
- Recommendations for how committees can further implement the CCMP
- Recommendations for giving PEP increased independence, therefore ensuring future autonomy
- Recommendations relating to the future financial security of PEP



PEP Organizational Assessment: Potential Policy Committee Involvement

- Development of questions soliciting PEP participants' input on Committee roles and responsibilities (individual correspondence or phone calls)
- Review of Draft Guiding Principles document
- Participation in full Management Conference Workshop to finalize Guiding Principles
- OTHER Policy Committee Involvement?
Please let us know!



QUESTIONS?