



**Peconic Estuary**  
PROGRAM

UPDATE

March 2019

# PEP CCMP Revision Underway

- **PEP held CCMP Workshop Meetings monthly** November - February to gain specific feedback on the Draft CCMP Outline and Chapters.
- **March 2019-** The draft CCMP document is anticipated to be submitted for review by EPA, NYSDEC, Suffolk County and Local Governments.
- **July- August 2019-** CCMP 60-day public review period.
- **December 31<sup>st</sup>, 2019-** Final CCMP complete.

The screenshot displays a digital calendar interface for the period from November 2018 to February 2019. At the top, there are navigation elements including 'Categories', 'Tags', and a date range selector set to 'NOVEMBER 2018 - FEBRUARY 2019'. Below this, there are buttons for 'Collapsing All' and 'Expanding All', along with an 'Agenda' icon. The calendar itself is organized by month, with each month's events listed in a separate block. Each event entry includes the date, day of the week, the workshop title, the location, the time, and a brief description of the meeting's focus. A 'Read more' link is provided for each event. The events are as follows:

| Month | Date | Day | Workshop Title   | Location  | Time                      | Description   |
|-------|------|-----|--|---|---------------------------|---|
| NOV   | 9    | Fri | CCMP Workshop: Water Quality Chapter                     | @ Suffolk County Community College Culinary Arts and Hospitality Center | Nov 9 @ 9:00 am - 1:00 pm | This WATER QUALITY CCMP Workshop meeting will look at CHAPTER 4: CLEAN WATERS AND WATERSHEDS.   |
| DEC   | 5    | Wed | CCMP Workshop: Habitat and Living Resources Chapter      | @ Suffolk County Community College Culinary Arts and Hospitality Center | Dec 5 @ 9:00 am - 1:00 pm | This HABITAT AND LIVING RESOURCES CCMP Workshop meeting will look at CHAPTER 5: Healthy Ecosystems with Abundant, Diverse Wildlife.                 |
| JAN   | 7    | Mon | CCMP Workshop: Climate Change and Resiliency Chapter     | @ Suffolk County Community College Culinary Arts and Hospitality Center | Jan 7 @ 9:00 am - 1:00 pm | This CLIMATE CHANGE AND RESILIENCY CCMP Workshop meeting will look at CHAPTER 7: Resilient Estuary Communities Prepared for Climate Change.         |
| FEB   | 6    | Wed | CCMP Workshop: Public Engagement and Stewardship Chapter | @ Suffolk County Community College Culinary Arts and Hospitality Center | Feb 6 @ 9:00 am - 1:00 pm | This PUBLIC ENGAGEMENT AND STEWARDSHIP CCMP Workshop meeting will look at CHAPTER 6: Well-informed, Active Stewards throughout the Local Community. |

# Peconic Estuary Solute Transport Model

Contracting with United States Geologic Survey

Status: GIS preparation and Model Development phase. **Next project meeting on May 15<sup>th</sup>, 2019.**

Link to [Solute Transport Model Workplan](#)



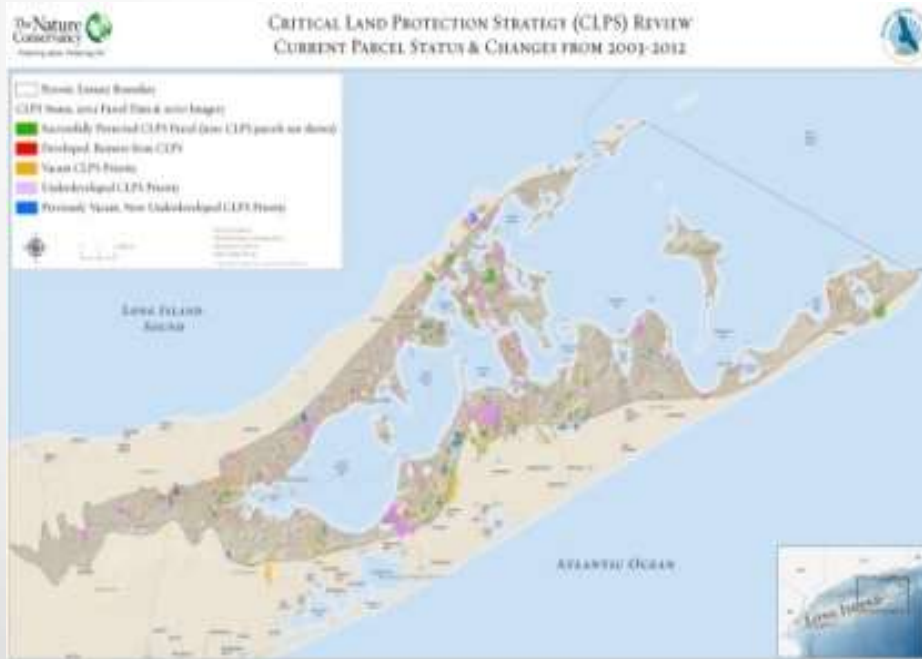
Objective: This Solute Transport Model will be a tool to estimate time-varying nitrogen loading rates to the Peconic Estuary resulting from wastewater and fertilizer inputs to the groundwater. The overall objective of the study is to apply methods that will allow for the quantitative analysis of nitrogen loading rates to the Peconic Estuary resulting from wastewater and fertilizer inputs to groundwater in Suffolk County. Specifically, the objectives of the investigation are to:

- 1) develop data sets representing current and historic land uses relevant to nitrogen loading in coastal watersheds
- 2) incorporate these data as source terms in models capable of simulating transport processes to estimate current estuarine loading rates and nutrient concentrations in the aquifer, and
- 3) use these current-condition models to simulate the response of estuarine loading rates to possible wastewater-management actions.

# CLPS Update and Climate Ready Assessment Services for PEP and Shinnecock Indian Nation

Contracting with Anchor QEA

Status: New CLPS criteria complete. Next Steps: Mapping of CLPS and continue work on Climate Vulnerability Assessment with PEP and Shinnecock Indian Nation.



## Objective:

1) Re-evaluation of the original prioritization of the Critical Lands Protection Strategy (CLPS).

2) Assessment of climate change vulnerabilities of the environmental restoration and protection programs for both the Peconic Estuary Program and Shinnecock Indian Nation.

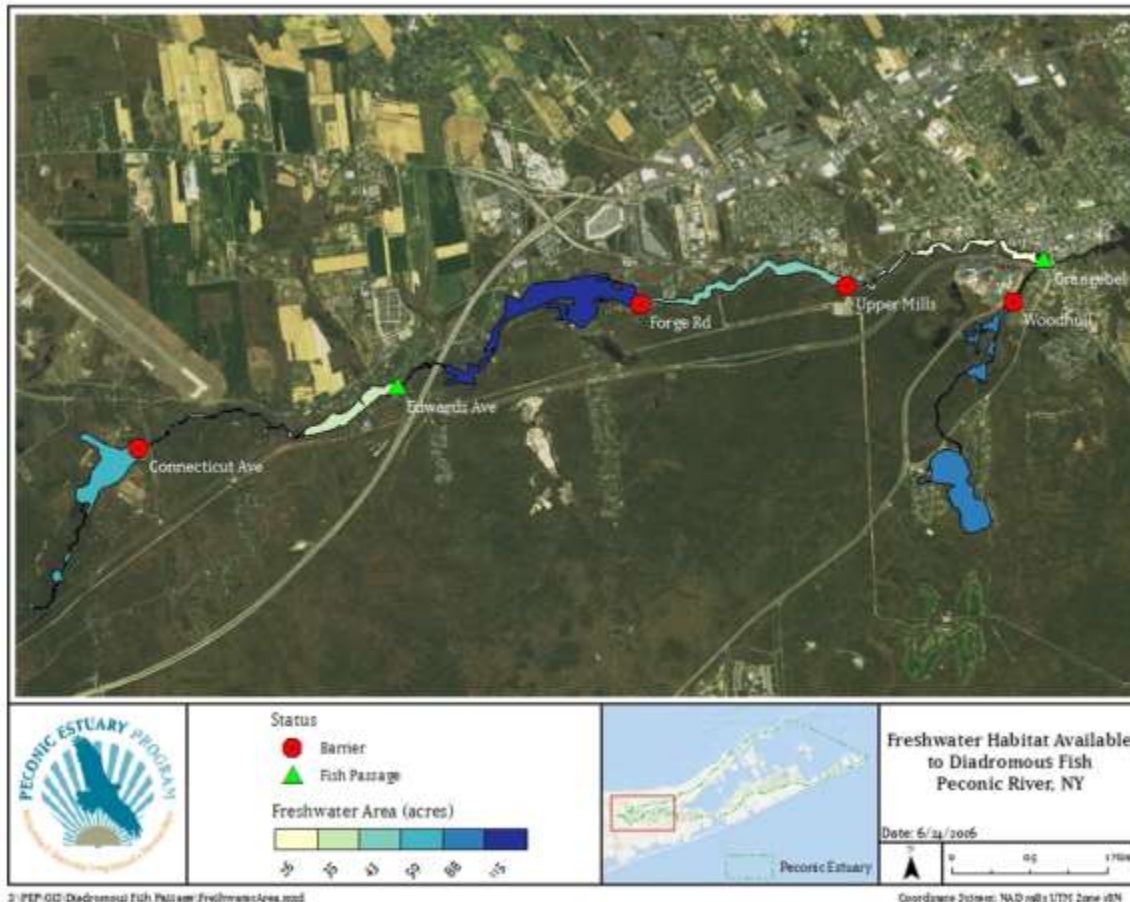


# Habitat Restoration Updates

The Peconic Estuary Program is working with its partners to restore critical freshwater spawning and maturation habitat for diadromous fish on the Peconic River.

Alewife migration season: March – May

Check out the Seatuck [website](#) to learn how to monitor for alewife!





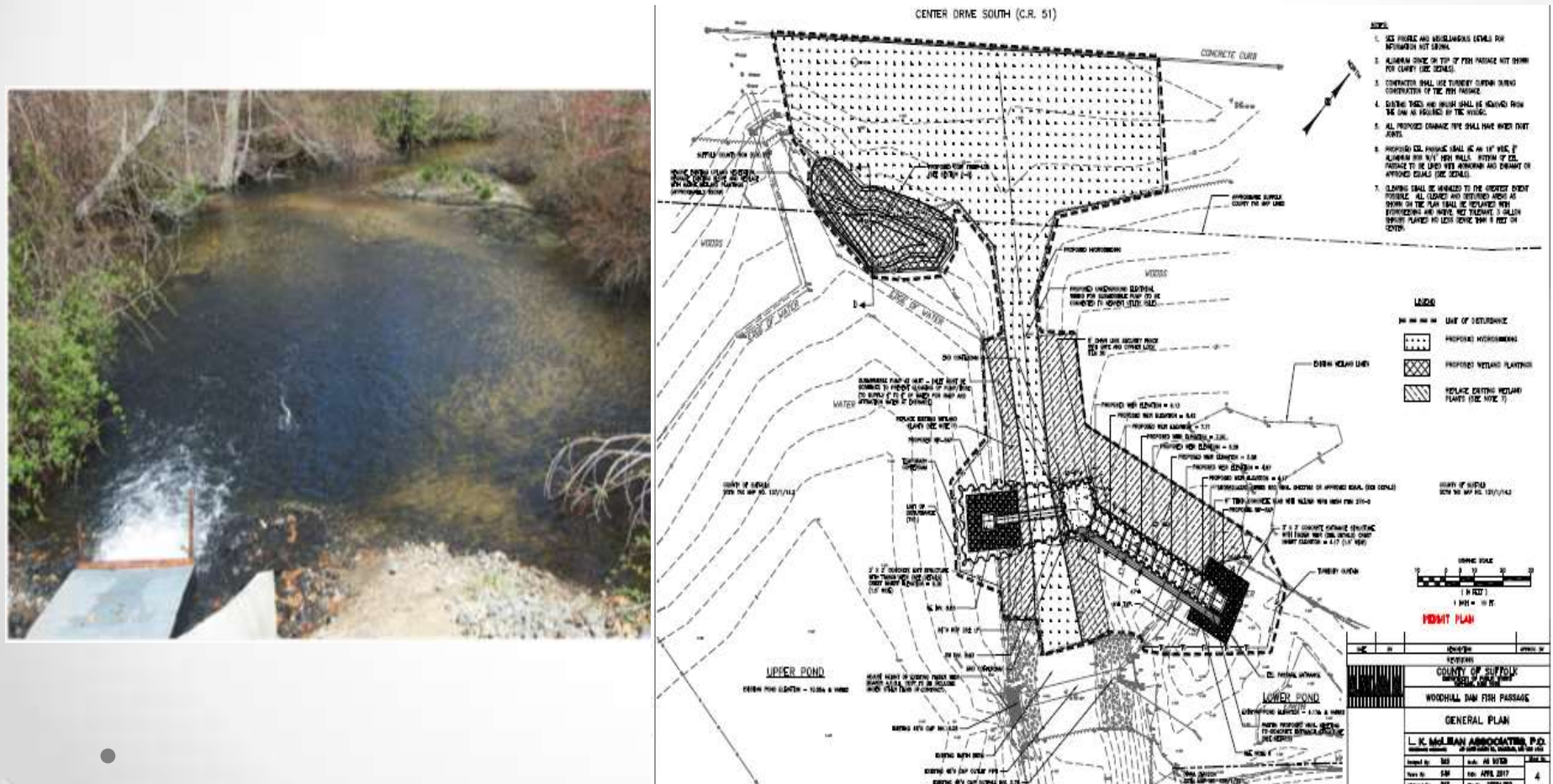


# Woodhull Dam Fish Passage Project

Suffolk County contracted with L.K. McLean Associates for engineering design/permitting services

Status: NYSDEC WQIP Funding awarded for fish passage construction.

Awaiting permit. Construction RFP under development with DPW- scheduled to advertise April 2019.



# Conceptual Habitat Restoration Design Planning in the Peconic Estuary

Peconic Estuary is contracting with Land Use Ecological  
Status: 3 of 4 site surveys complete. 1 site survey underway.

**Conceptual habitat restoration designs  
will be developed for the following  
identified priority sites:**

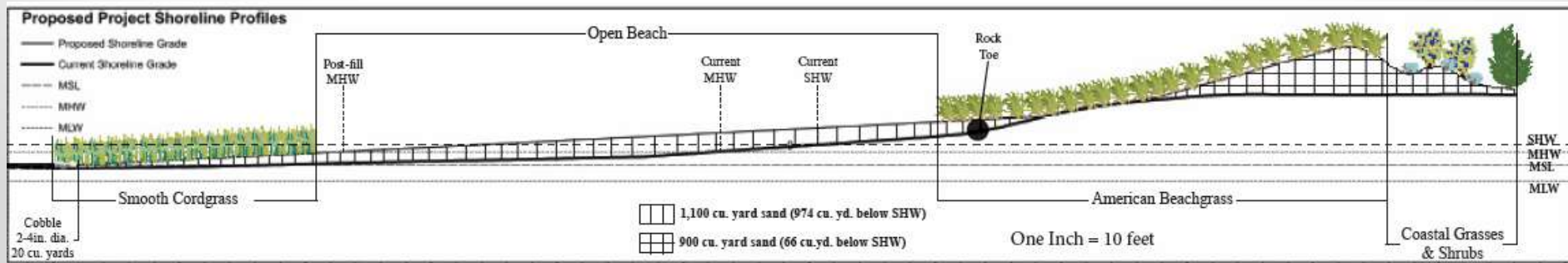
- a.** Southold: Narrow River Road Wetland Restoration
- b.** Southampton: Iron Point Wetland Restoration
- c.** East Hampton: Lake Montauk Alewife Access and Habitat Enhancement
- d.** Riverhead: Meeting House Creek Main Road Wetland Construction/Restoration
  - 2016 Suffolk County Capital funds have been secured for implementation of the Lake Montauk project.
  - PEP secured 2018 NEP Funds (\$173,719) for implementation of the Meeting House Creek project.





# Living Shoreline Pilot Project- Greenport

PEP is contracting with Cornell Cooperative Extension and Peconic Land Trust  
Status: All permits in hand. Construction will occur spring 2019.



# Seagrass Bio-optical Model

PEP is contracting with The Research Foundation of SUNY Stony Brook  
Status: Final tasks underway.



- Objective: Site specific information to inform eelgrass management and restoration programs. This project will lead to a better understanding of specific light and temperature requirements for eelgrass in the Peconic Estuary (PE). This is the critical next step towards understanding the threats to the eelgrass community and where restoration projects have the best probability of success.
- Link to project presentation at August 15<sup>th</sup> TAC meeting: <https://www.peconicestuary.org/peconic-estuary-seagrass-bio-optical-model-project-presentation-kaitlyn-otoole-2018/>

# Expansion and Monitoring of the Town of Southold Living Shoreline Demonstration Project

Peconic Estuary Program is contracting with Cornell Cooperative Extension  
Status: Contract is executed. Work is underway.



Figure 2. Location of proposed living shoreline project on Southold Town Trustee land near Suffolk County Marine Environmental Learning Center.

- Expansion to an existing Town of Southold Living Shoreline Demonstration Project contract with the Town of Southold Trustees and the Suffolk County DEDP.
- Establish a larger geography of the project and monitoring services to run in tandem with the existing project to enable the quantification of nitrogen and pathogen uptake results and assessment of the effectiveness of the living shoreline to mitigate nitrogen pollution in the Peconic Estuary-  
*Spartina alterniflora* and ribbed mussels.



# 2017 Habitat Restoration Plan & Map

## Finalized

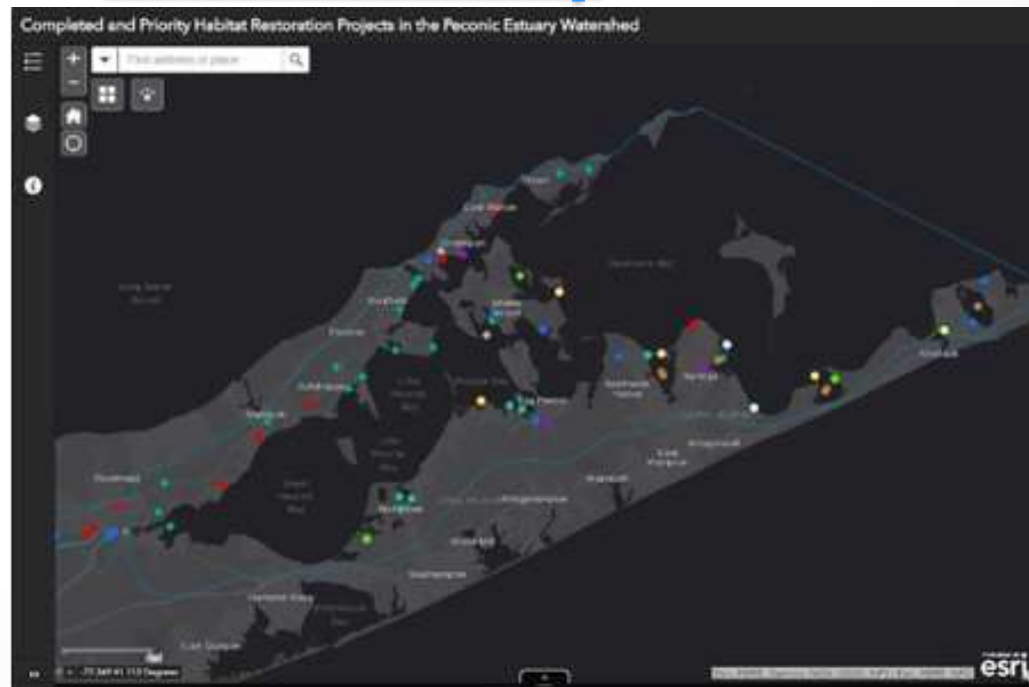
- Interactive GIS Map of Habitat Restoration Projects complements the [2017 Peconic Estuary Program Habitat Restoration Plan](#) and will serve as a tool to track habitat restoration progress: completed, ongoing, and priority habitat restoration projects in the Peconic Estuary watershed. **Next Natural Resources Subcommittee meeting will review status of projects and solicit project nominations.**
- Click [here to view the map](#).

### 2017 PECONIC ESTUARY PROGRAM HABITAT RESTORATION PLAN



Prepared by:

Elizabeth Hornstein, Peconic Estuary Program State Coordinator



# Hardened Shoreline GIS Mapping Project

With the help of two interns, PEP is undertaking a GIS mapping project to quantify the amount of hardened shoreline in the Estuary. This supports Action 3, under Objective 9 in the Habitat Restoration Plan. The last survey was in 2003.



# Public Education and Outreach

- **Citizens' Advisory Committee Meeting**, March 19<sup>th</sup> 2-4 pm at the Hampton Bays Public Library.
- **High quality videos** produced for National Estuaries Week, and The importance of the Estuary (Spanish-version), see the Vimeo page for others:  
<https://vimeo.com/peconicestuaryprogram>
- Click on the videos to watch!

