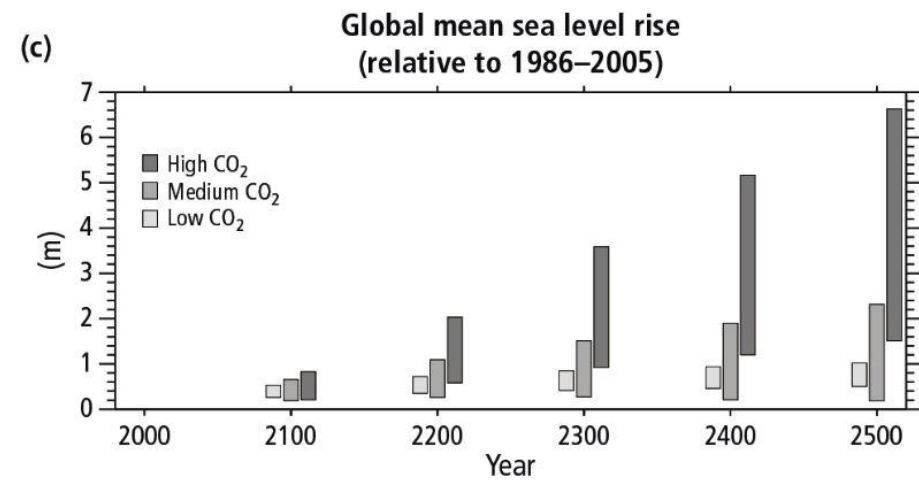
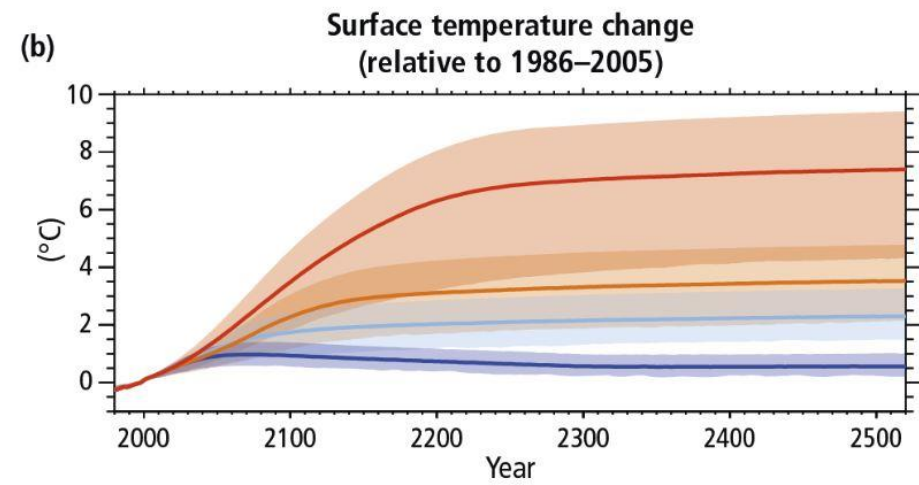
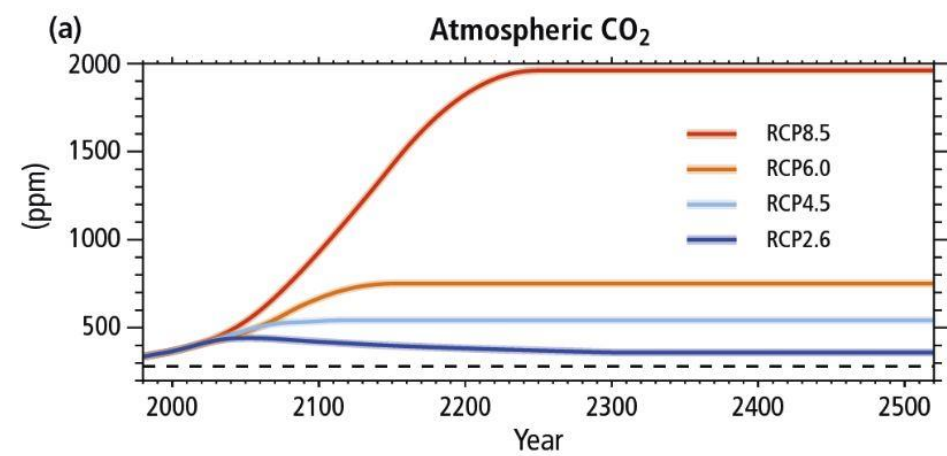


Our World Depends on Us.

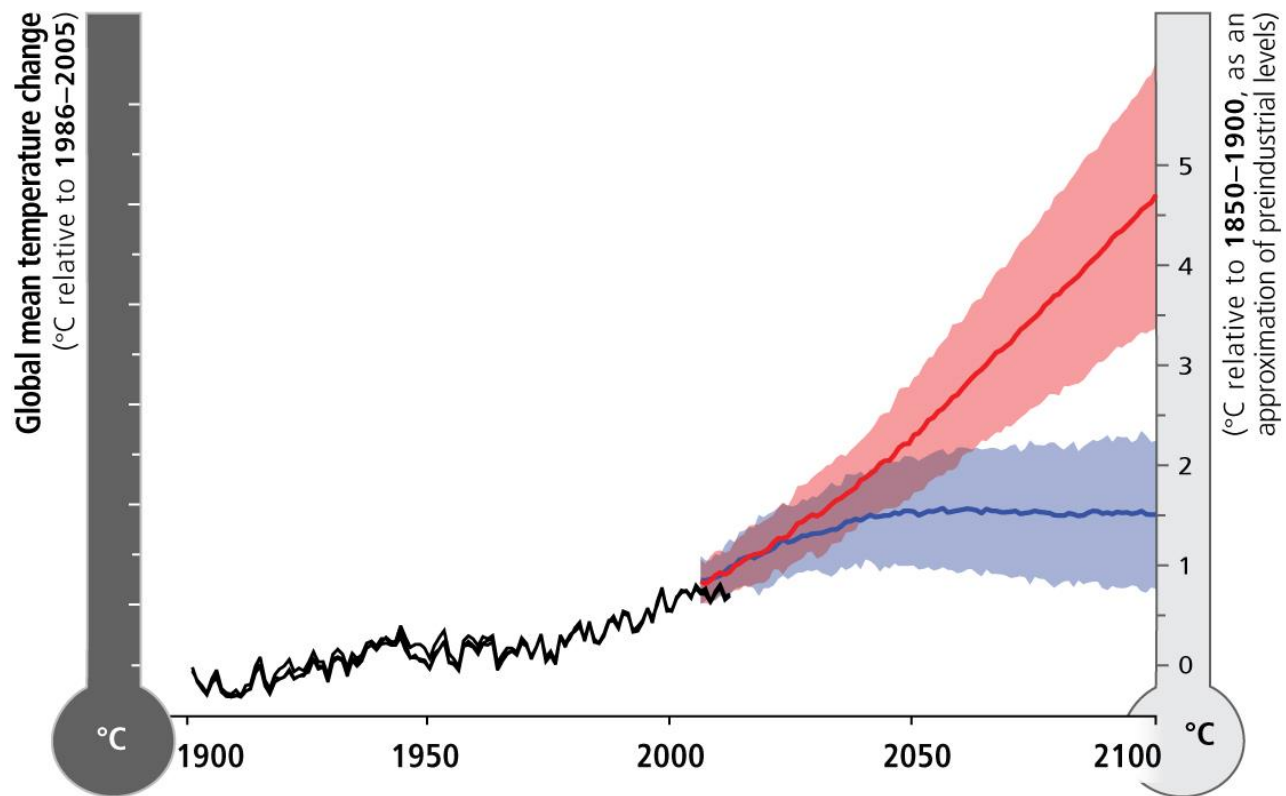
Long Island, New York

Alison Branco, Ph.D.

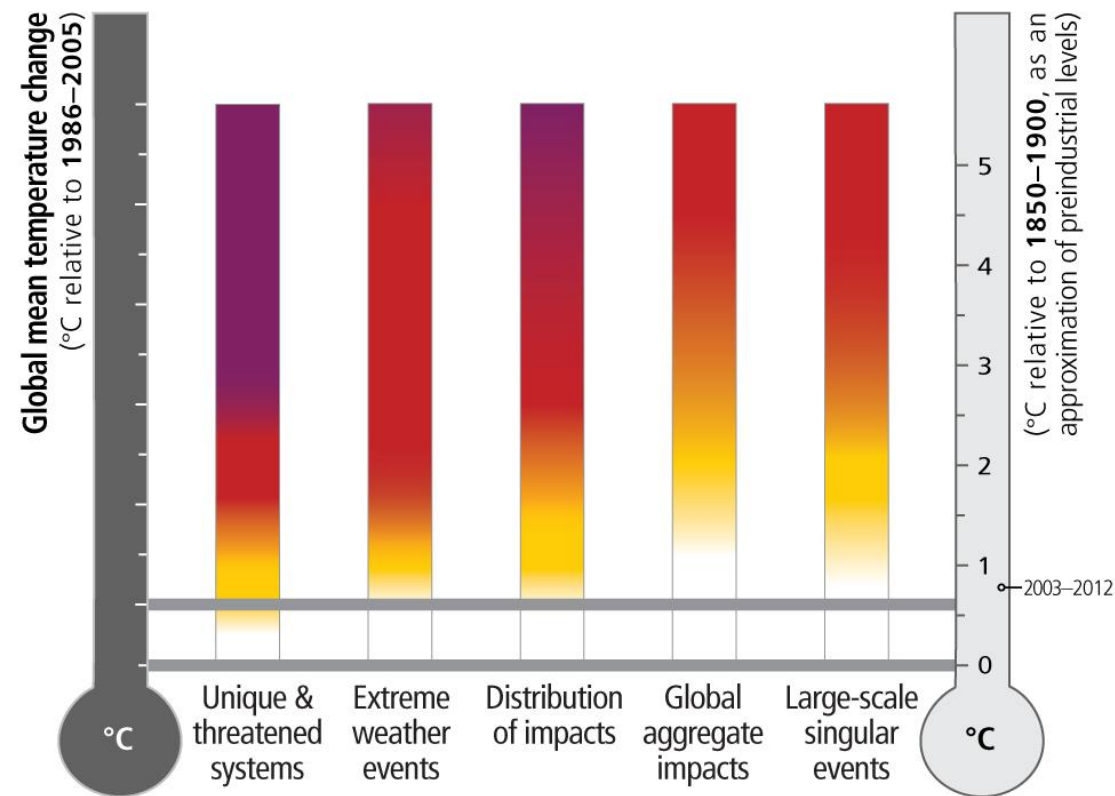
Director of Coastal Programs



Source: IPCC 2014

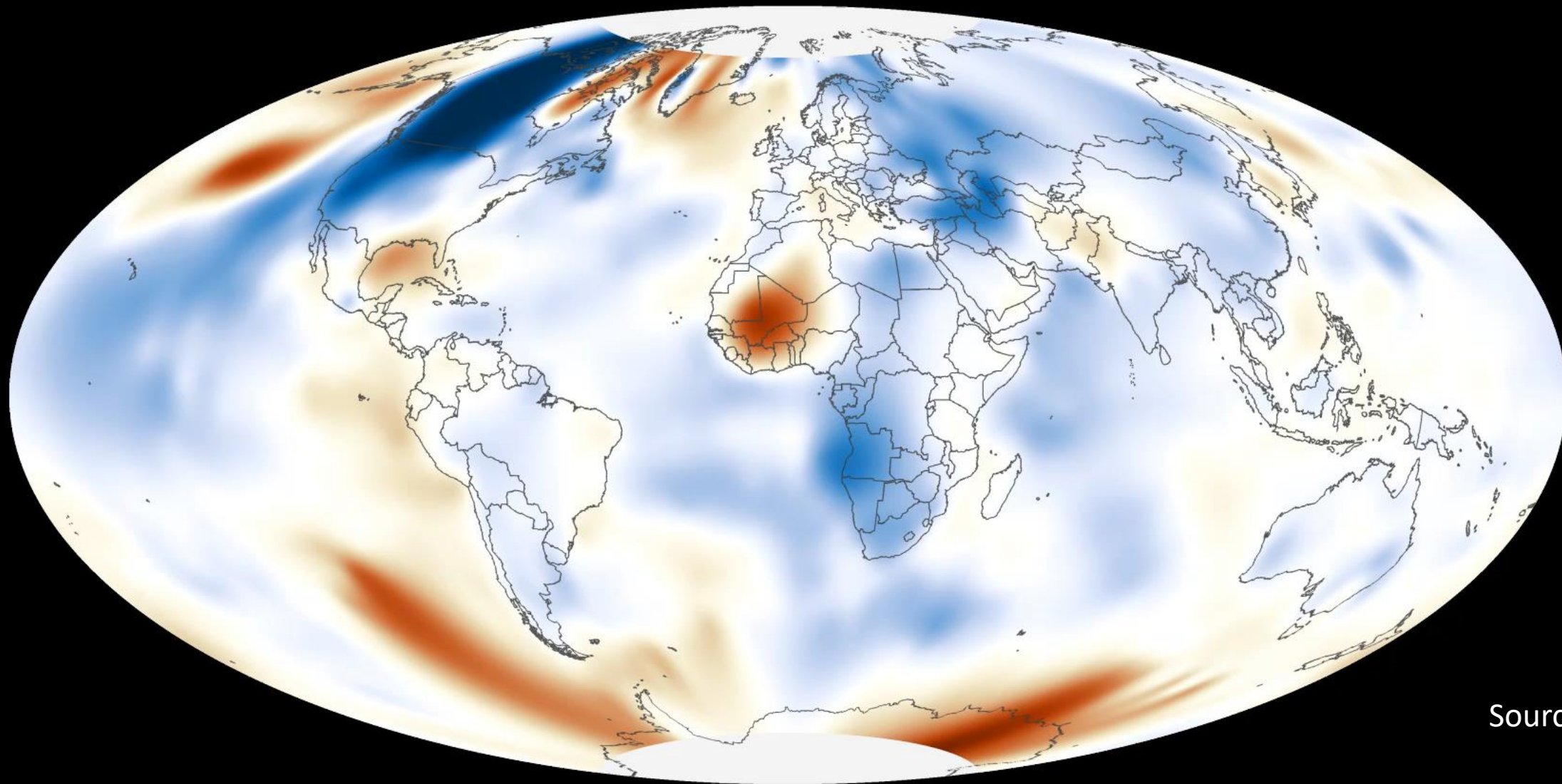


- Observed
- RCP8.5 (a high-emission scenario)
- Overlap
- RCP2.6 (a low-emission mitigation scenario)



Level of additional risk due to climate change

Undetectable Moderate High Very high



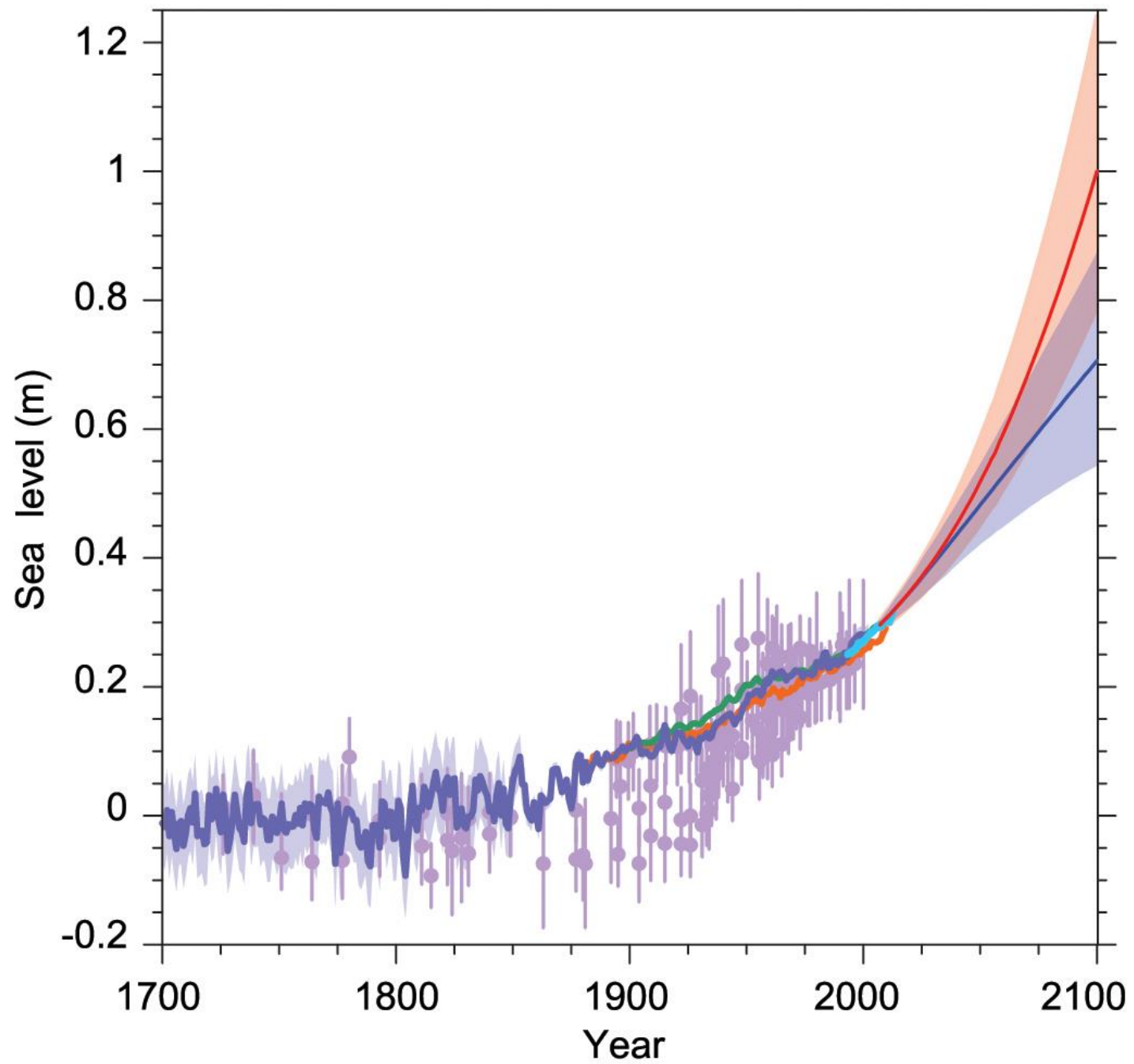
Source: NOAA

1880

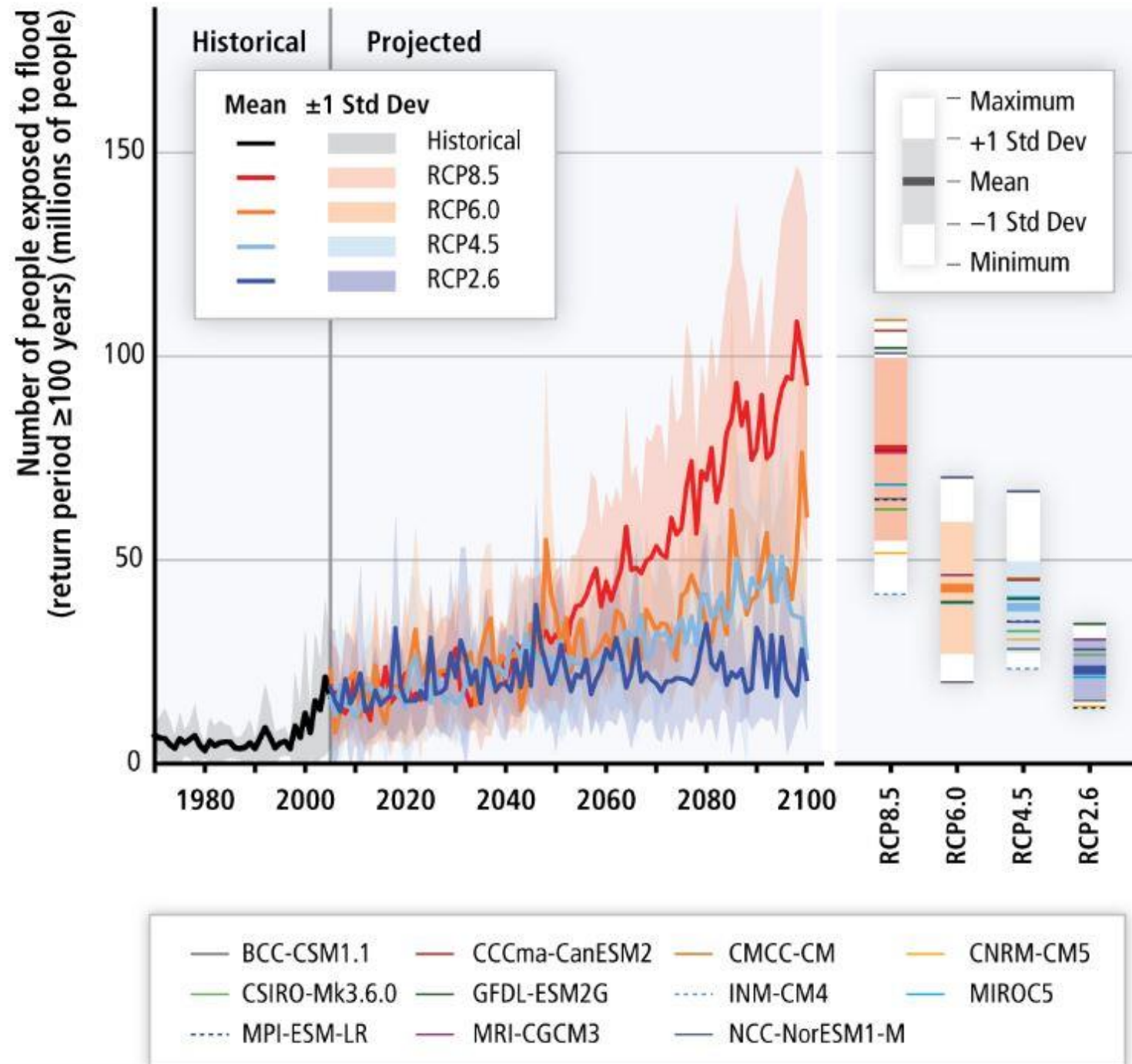
compared to the 20th Century average



NOAA

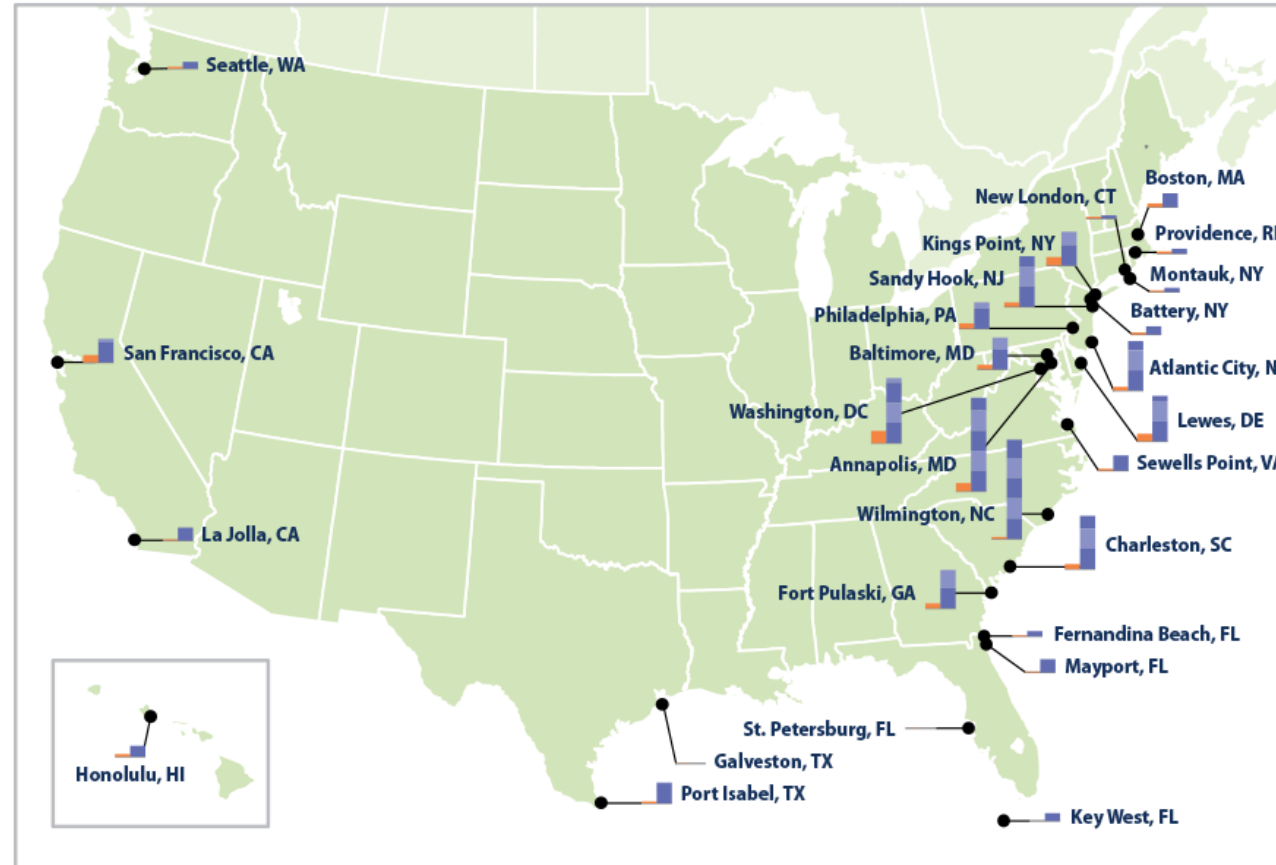


Source: IPCC 2014



Source: IPCC 2014

Frequency of Flooding Along U.S. Coasts, 2010–2015 Versus 1950–1959



Average number of flood days per year:



Data source: NOAA (National Oceanic and Atmospheric Administration). 2016 update to data originally published in: NOAA. 2014. Sea level rise and nuisance flood frequency changes around the United States. NOAA Technical Report NOS CO-OPS 073. https://tidesandcurrents.noaa.gov/publications/NOAA_Technical_Report_NOS_COOPS_073.pdf.

For more information, visit U.S. EPA's "Climate Change Indicators in the United States" at www.epa.gov/climate-indicators.

Source: EPA

Sea Level Rise in Suffolk County

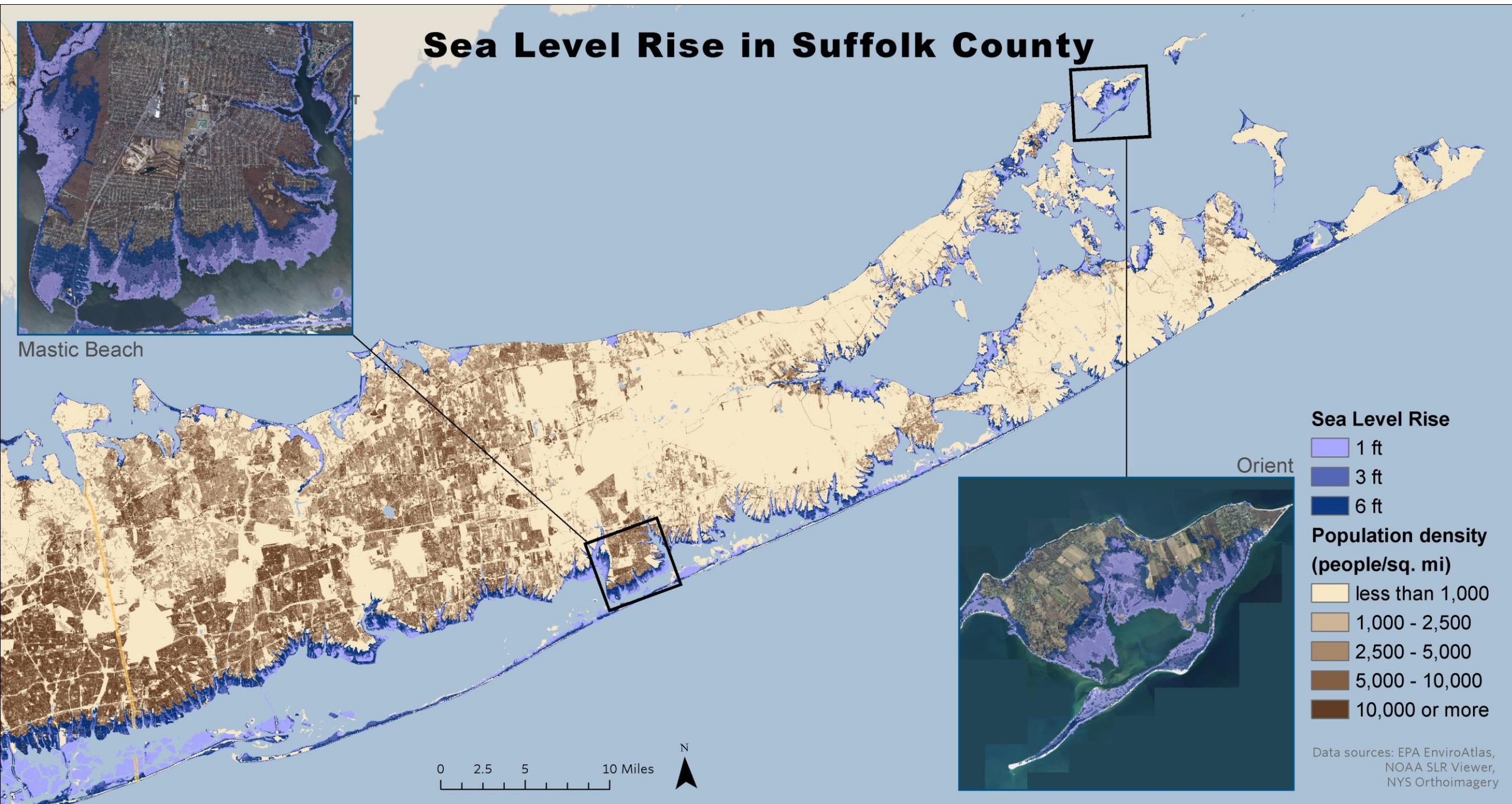


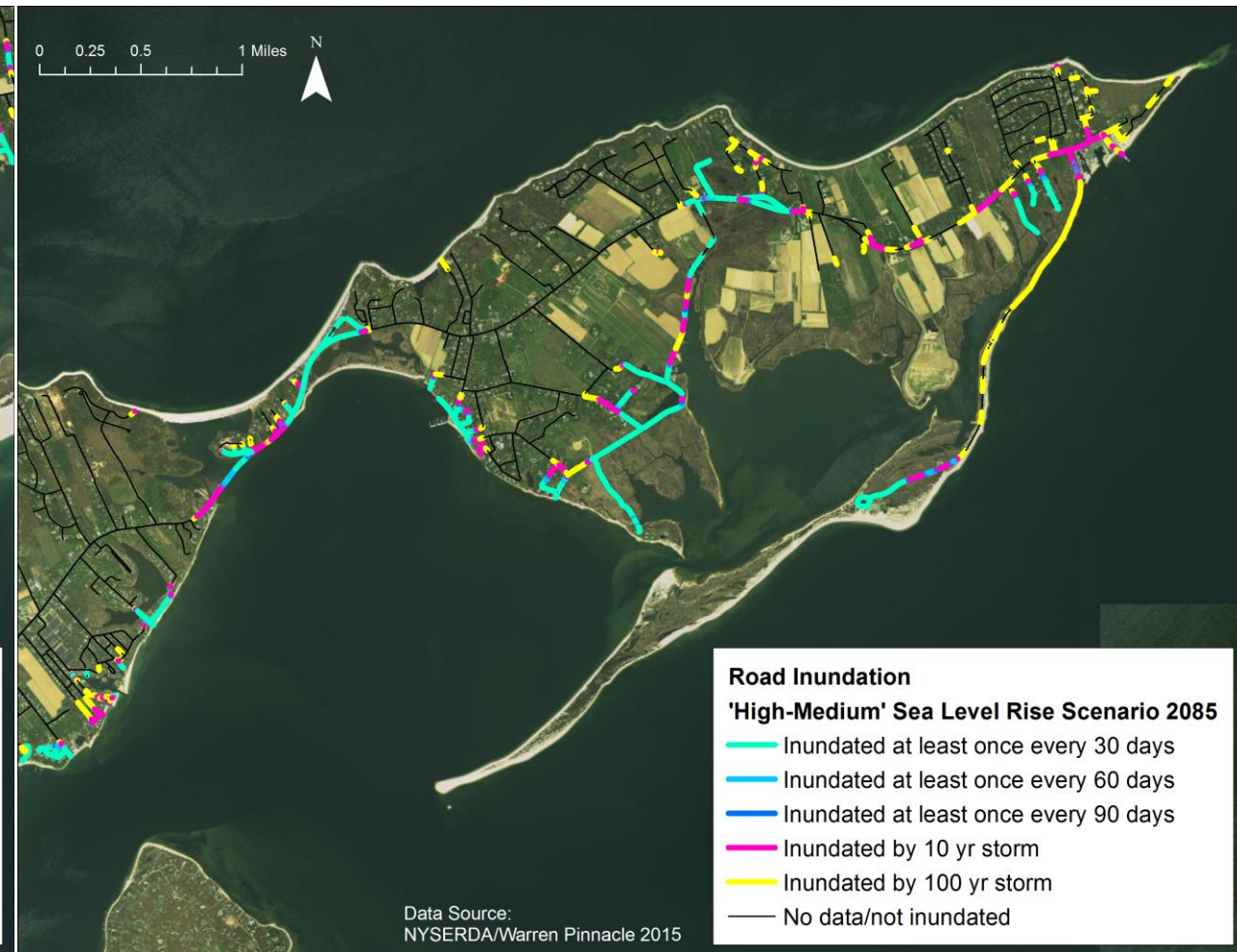
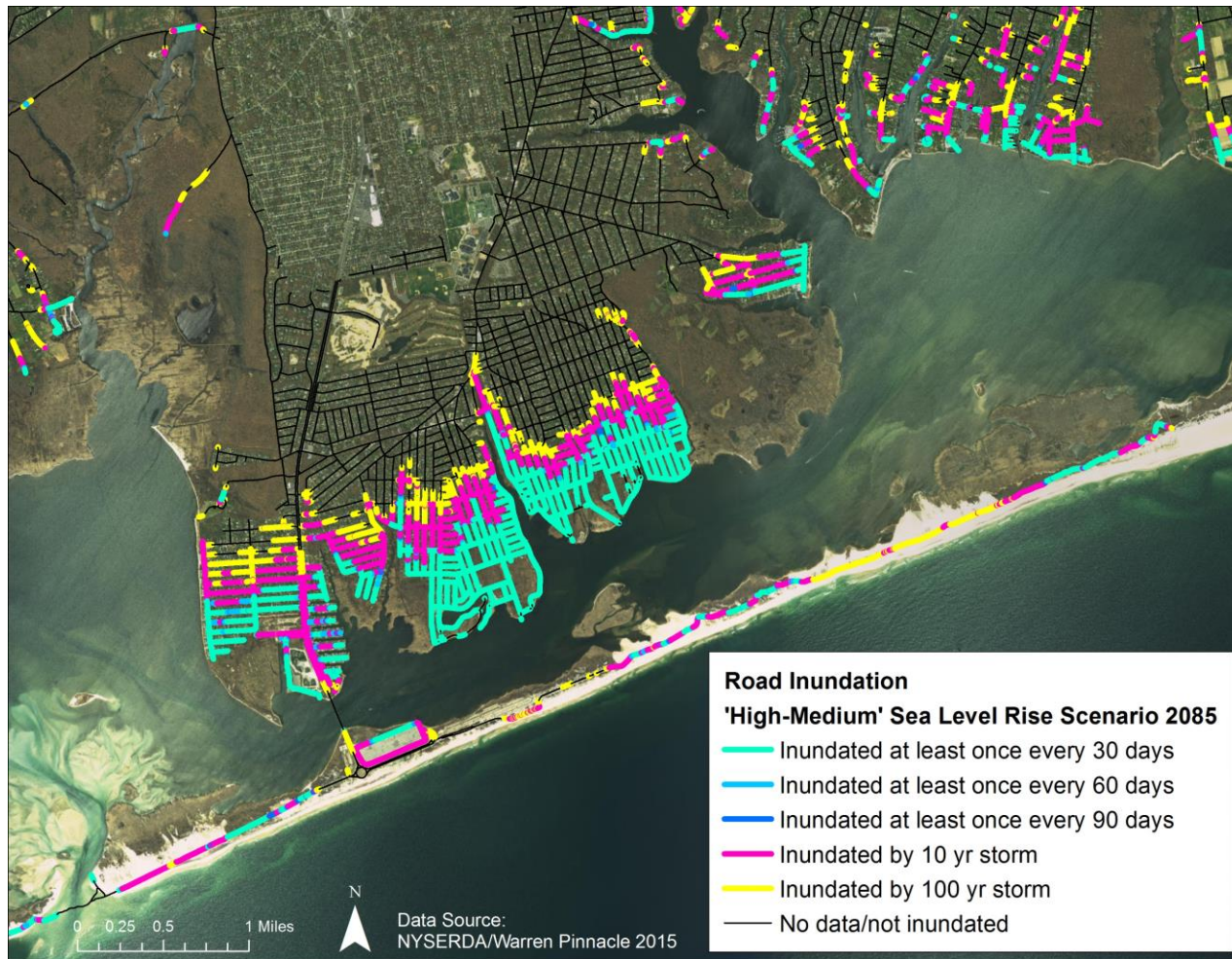


Photo: Matthew Grasso, TNC

Vulnerability of Roadways

Mastic Peninsula

Orient Point







The Nature
Conservancy

Data: <http://warrenpinnacle.com/prof/SLAMM/NYSERDA2015/index.html>

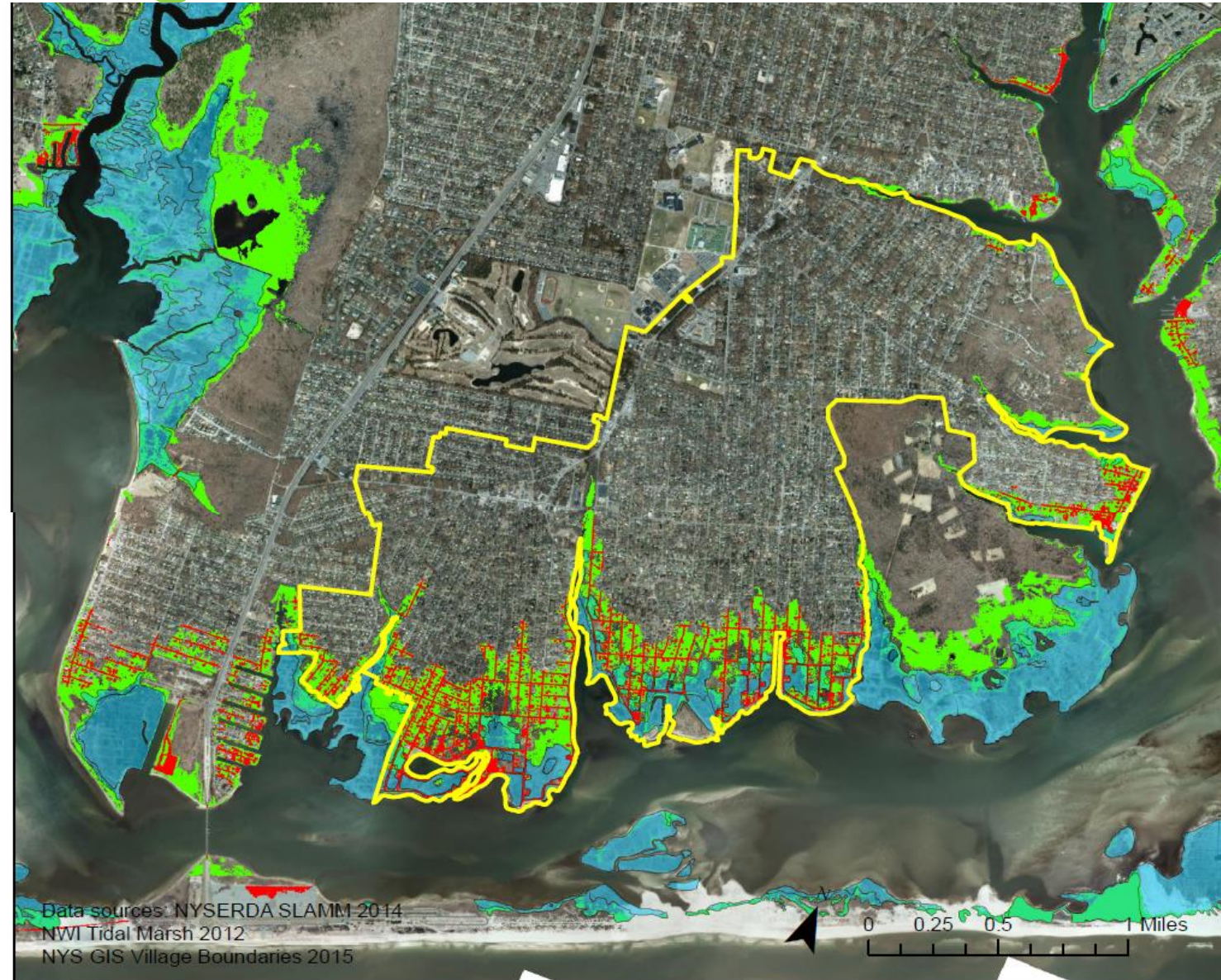
Marsh Migration Info

Mastic Peninsula example:

Current tidal marsh &
marsh migration potential

-  Village of Mastic Beach
-  Current Tidal Marsh Extent (2012)
- Future SLAMM projection (RIM MIN - 2085)**
-  Flooded Developed Dry Land
-  Tidal Marsh

Long Island Wide:	Suffolk	Nassau	Long Island	
2005/2008 Marsh Extent (Vegetated)	12,896	7,336	20,232	acres
Marsh Gain Potential (2085)	4,379	1,316	5,695	
Marsh Loss Potential (2085)	2,795	659	3,454	



A wide-angle photograph of a sunset over the ocean. The sky is a gradient of colors from light blue at the top to a deep orange and red near the horizon. The sun is a bright, glowing orb just above the horizon line. The ocean is dark blue with small, choppy waves. The word "WATER" is written in large, white, bold, sans-serif capital letters across the middle of the image, partially obscuring the sunset and the horizon.

WATER





Photo: Tom Fox

Coastal Resilience

WHAT DOES THAT MEAN?

- **Clean Water**
- **Dynamic Sediment**
- **Room to Move**
- **Full Tidal Range**
- **People Out of Harm's Way**



CLEAN



DYNAMIC

A scenic landscape featuring a dense forest of tall, green trees in the background. In the middle ground, there is a bright green field, possibly a golf course, with a small body of water or pond visible. The foreground is filled with dark green, leafy bushes and trees, partially obscuring the view. The sky is a clear, bright blue. Overlaid on the center of the image is the word "ROOM" in large, bold, white capital letters.

ROOM



TIDE



COMMUNITY

PLAN



Photo: Jane Bimson via Facebook "Stop the Corps, Save the Beach"

Montauk Hamlet Study, East Hampton Town